

All DOSHISHA final report

Ever thought how screw play crucial roles in pushing the limits?

Why we choose the screw

Screws good point

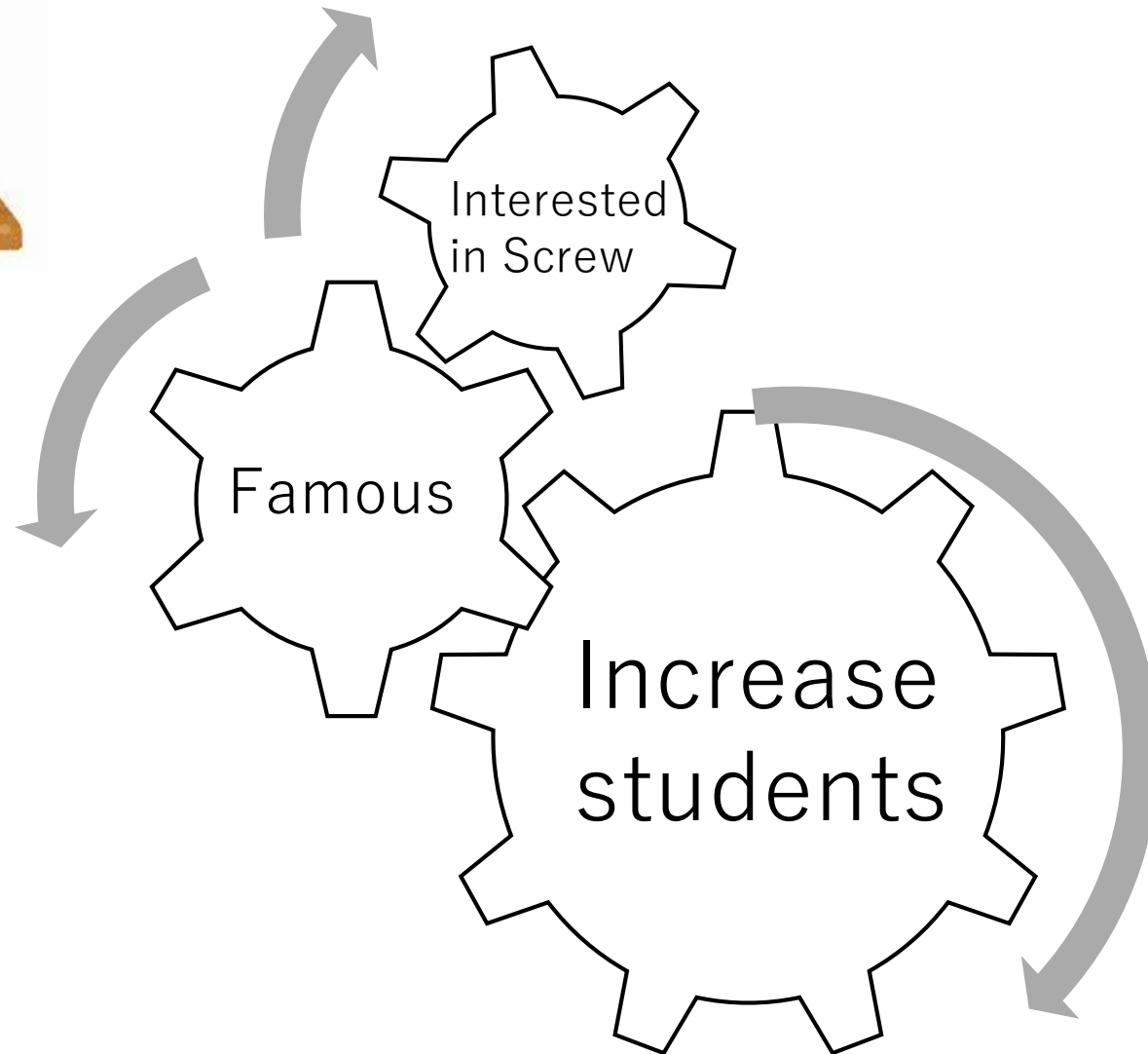
- Basis for making things
- Common View

But...

- Not attention



Objection



Schedule

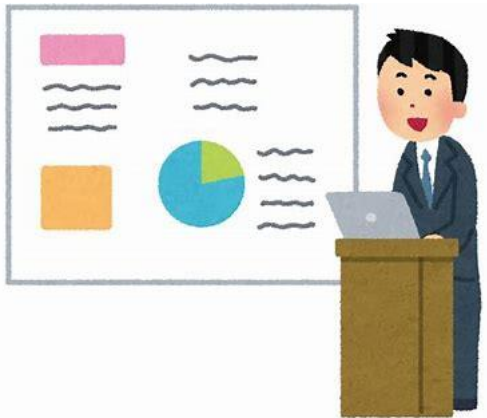
July - Selected Company

August - Visiting Company

October – Discussion with Company staff

November 15 -

Lecture at University



November 22-

Visiting company in Osaka





**Ever thought how screws play
crucial roles in pushing the limits?**



Lecture

TOPIC: Screws technology

DATE: 11/15 Fri

TIME:15:00-16:30

VENUE: Rikagakukan Lounge 2F

Factory Visit

OBJECTIVE: Manufacturing

DATE: 11/22 Fri

TIME:16:00-17:30

VENUE: Maruemu works

Destination place: Nozaki station in
Osaka

Meeting place: IR Doshishamae

Meeting time:15:00

**Registration ongoing till
11/12. Click QR below**



Office of Faculty / Graduate School of
Science and Engineering,
Doshisha University
TEL: +81(0)774-65-8200

You can select one side day. In the case,
The person that selected both days is
priority. "Cost free".

Flyers

Content



Lecture

- Function in English
- History in Japanese

November 15

– Lecture at University

Content

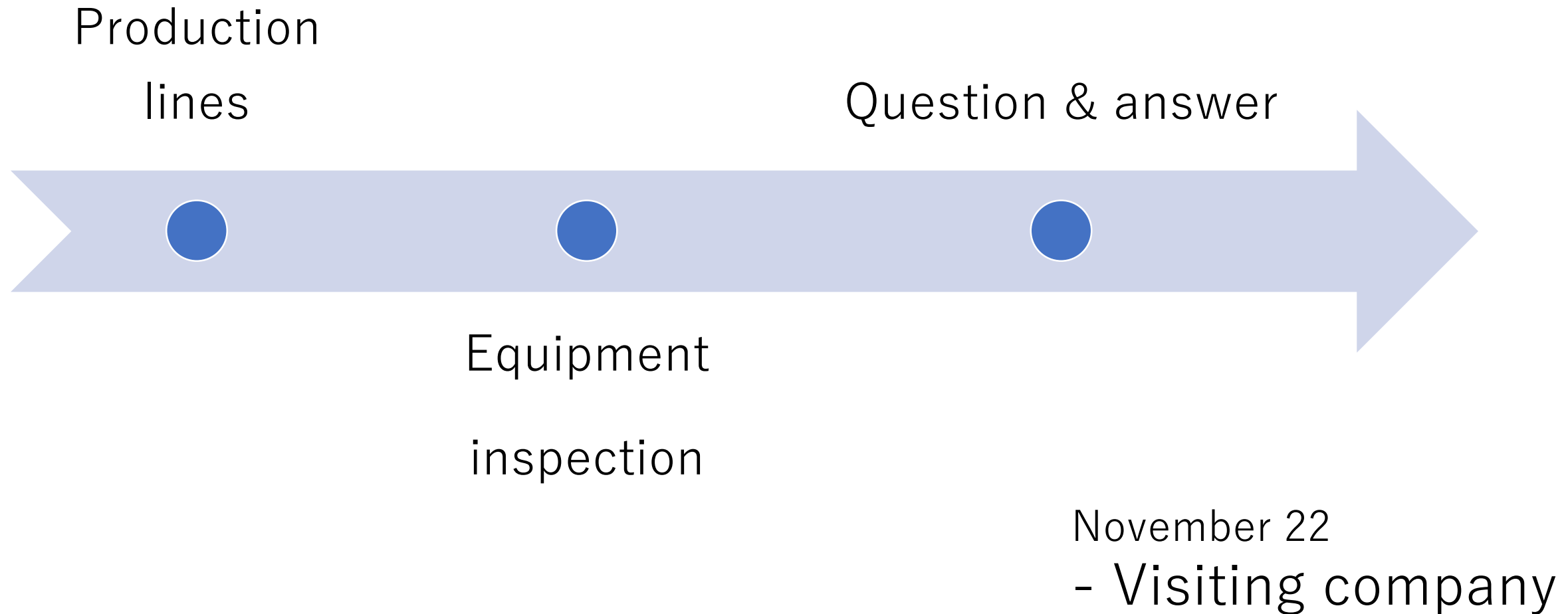


Factory tour

- Presentation about the factory and production lines

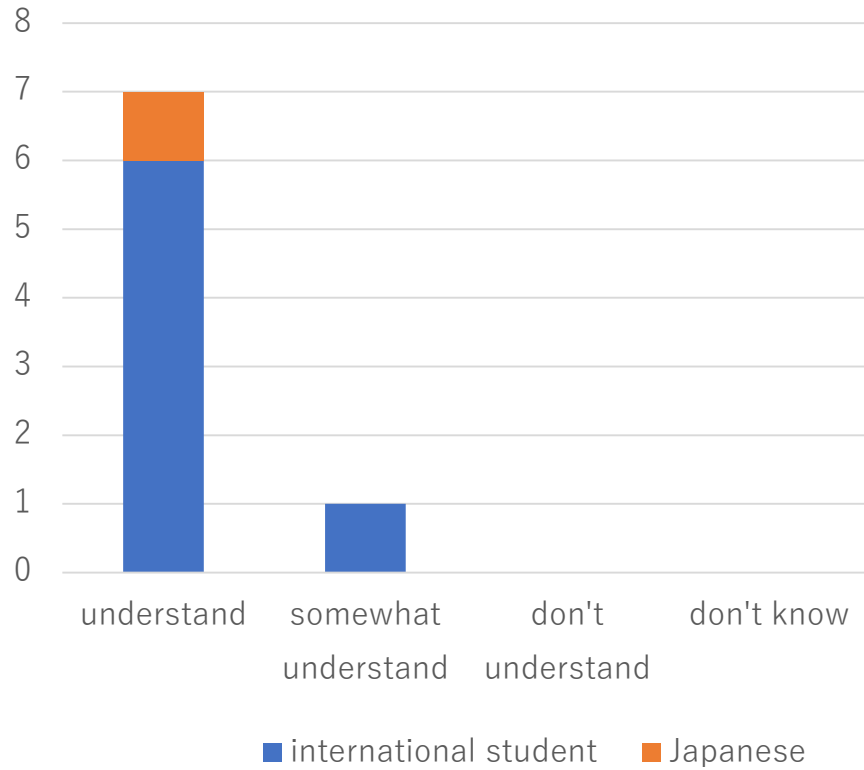
November 22
- Visiting company

Content

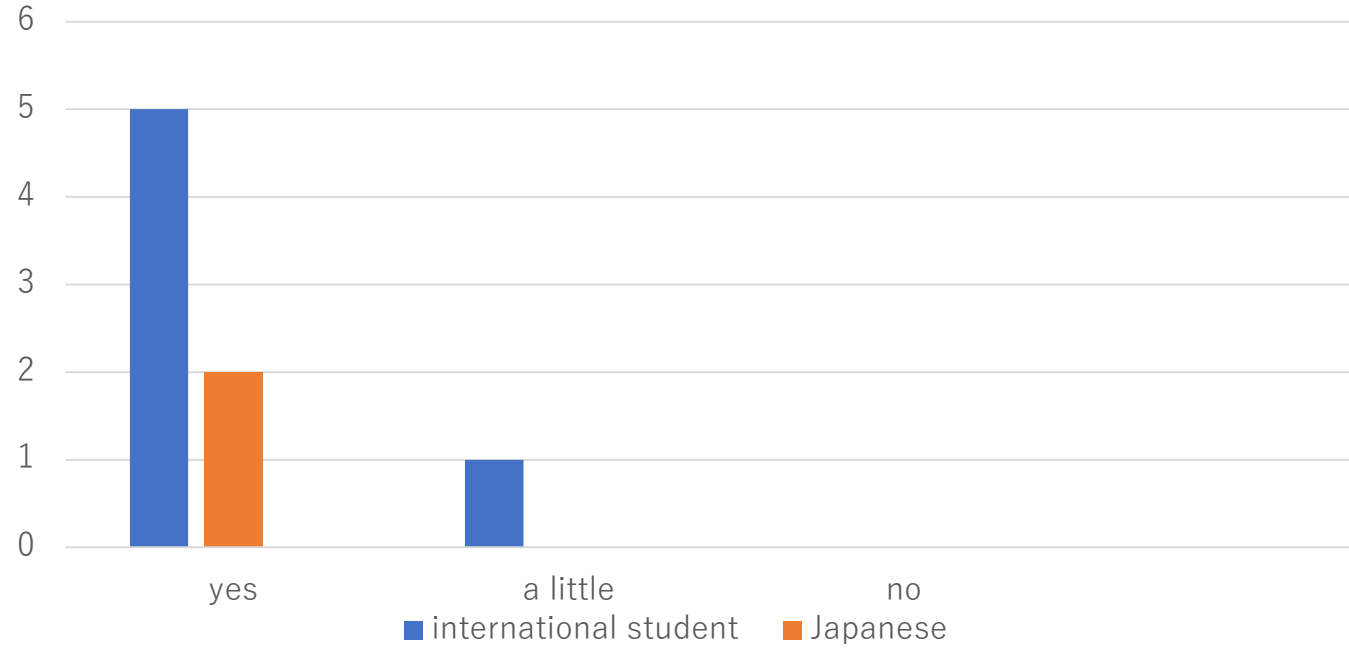


Survey

How was the lecture?



Do you change about Screw?



Comment

"The guidance from the technicians at the factory tour was kind and easy to understand."

"All the machines I saw at the factory were cool. It is worth doing next year".

"Screws are simple but I was very interested

What we learned

Screw

- High technology
- Attractive

→Worth

In the Future

- Communicate information to more people
- Being continue this project

Thank you for watching!