

Enjoy Kyotanabe's Campus Life!

Final Presentation

2023/03/14



Outline

- Purpose of the project
- Details of project implementation
- Deliverables
- Difficulties through the project
- Skills acquired throughout the project
- Future expected results
- What we achieved in the program

Purpose of the project

1. Inform future international students about life in Kyotanabe
2. Attract international students to Doshisha University's ISTC program

We wanted to tell FUTURE INTERNATIONAL STUDENTS that...

Living in Kyotanabe can be budget friendly and it has access to many stores as well as major transportation

Details of project implementation

June: start the “pamphlet team”

29th June: the first workshop

7th July: the second workshop

22nd September: proposal presentation

October: collect data, pictures, and information

November: the interim report session with advisers

24th February: submit the final design to Taihei Insatsu

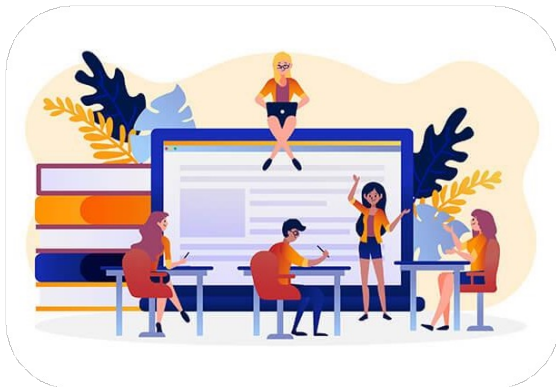
Details of project implementation

We made a lot of changes and corrections to improve our pamphlet **from November to 24th February.**

- **4** pages → **8** pages (after the interim report session with advisers)
- Submitting the design to Taihei Insatsu, and corrections them according to their advice **6** times (12/23, 1/20, 2/13, 2/20, 2/24, 3/2)
- Reviewing the contents with the co-learning office in order to avoid misunderstanding

Deliverables

When students start their new life abroad, they are concerned following things.



Atmosphere in the university



Facilities around the university



Cost of living

We put this information in our pamphlet.

Deliverables



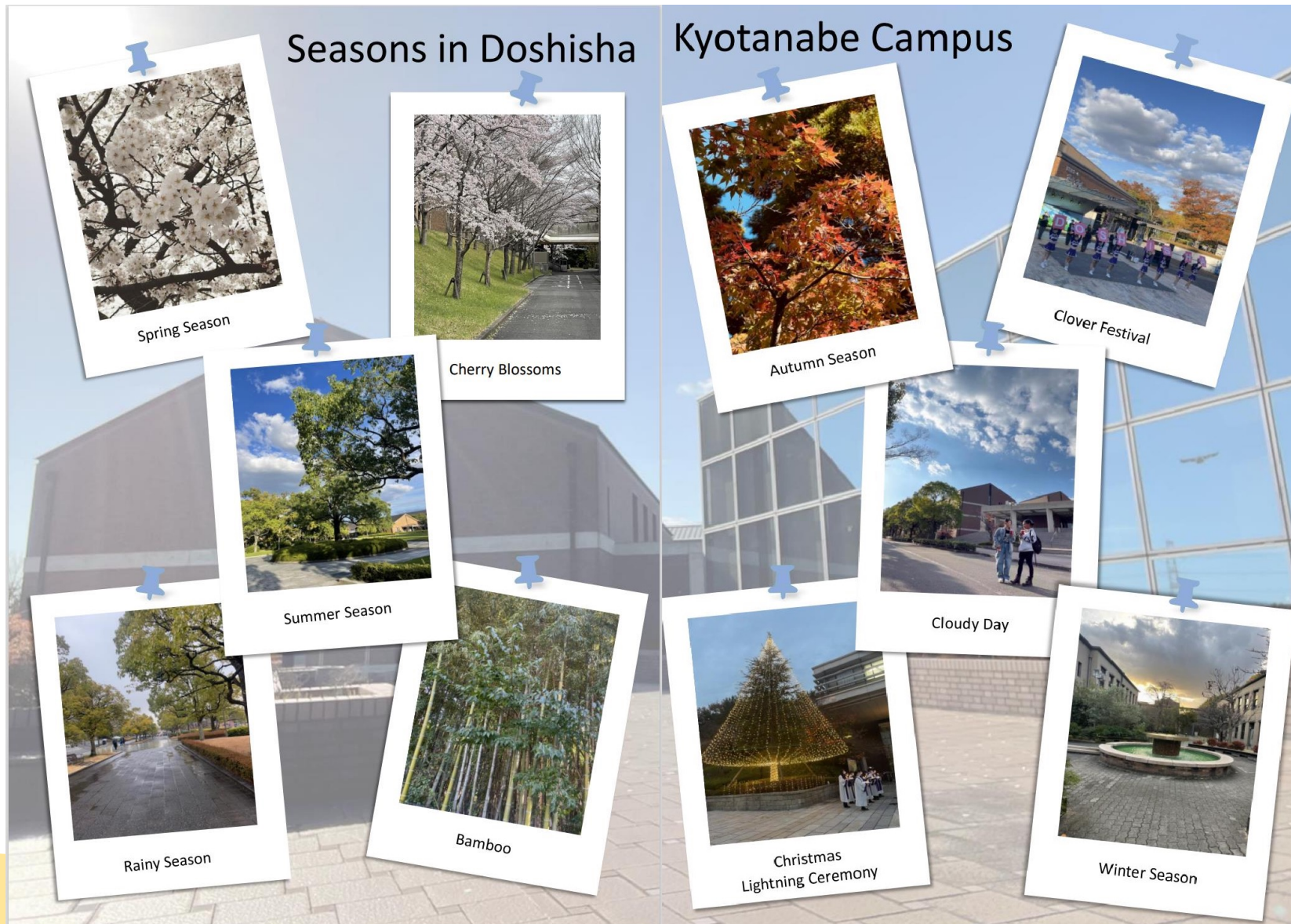
Doshisha University
International Science and
Technology Course



Life in Kyotanabe

Discover the Beauty of Doshisha University Kyotanabe Campus

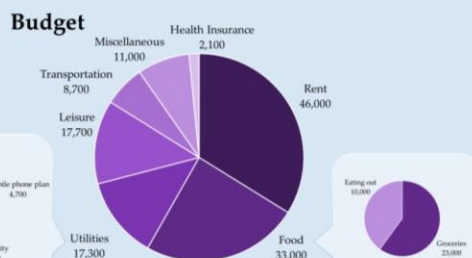
Deliverables



Deliverables

Monthly Expenses of Kyotanabe Students

We conducted a survey of 40 students (both International and Japanese) residing in Kyotanabe to formulate these budget charts. The three pie charts below show the average amount of money they spend in a month.



Kyotanabe is a small town in the countryside of Kyoto prefecture. There are various types of apartments available, supermarkets, restaurants, and other public service providers. The neighborhood is very safe and peaceful which could contribute to a productive study environment.

According to the survey:

- This is the average rent cost of a fully-furnished apartment. Self-contained semi-furnished single apartments in the area can be found cheaper than above. Kyotanabe has a large student population, so there are a lot of apartments for students here.
- The food budget can fluctuate according to one's choices of dining in and out. Kyotanabe campus has some restaurants and cafeterias where you can enjoy a meal. The price of the on-campus meal is about 700 yen.
- In Kyotanabe, it is usually under 10 °C in winter and over 30 °C in summer. Electricity during cold winter months and hot summer months can even double depending on the chosen heating or cooling systems than the amount shown on the pie chart above.
- Some accommodations offer free internet.

Housing

Here is an example of a typical dormitory room.



- Room rent	38,000 yen/month	- Private facilities: bathroom/kitchen/outdoor space for washing machine
- Water	3,000 yen/month	- Shared facilities: bicycle parking space/coin-operated laundry
- Internet	1,100 yen/month	- Location: 14 minutes on foot from Kyotanabe campus
- Gas/ Electricity	actual expense	

What are you worried about?

Transportation

Many apartments are within walking distance from campus. Students can get certificates for discounted train tickets at the Office of Faculty/ Graduate School of Science and Engineering. Also, there is a free shuttle bus service between Kyotanabe and Imadegawa campuses (check Doshisha's current student website). The bus runs approximately every two hours. You need to present your student ID to board the bus.

Food

Self-catering is the best option to avoid overspending by means of eating out or ordering takeout. In the survey, some students mentioned that there are opportunities to organize a get-together dinner at the beginning of each semester, therefore, be prepared for additional spending on food and beverages besides the amount budgeted for in a month.

Scholarship

Various categories of scholarships are available at Doshisha University for self-financed students. This is financial assistance for international students who meet specific requirements.

Further information about scholarships can be found on the web page of Office of International Students. Scan the QR code to visit the page.



Part-time job

International students can search for part-time jobs through genuine online platforms. While having a certain level of Japanese language proficiency is an advantage, students are still able to find jobs that require proficiency in other languages. For example, a part-time English teaching job is available for international students.

You can find answers here!

Hospital

First, consult with the health center on campus. Alternatively, go to a hospital that accepts international students. Below are hospitals that accept foreigners around the university.

Internal medicine:

- Miyamaki Central Clinic ① (advance call required)
- Kyotanabe Central Hospital ② (possible with a friend who can interpret)
- Takemura Clinic ③
- Matsumae Cardiology Clinic ④

Orthopedics:

- Iwata Orthopedic Clinic ⑤ (advance call required)
- Yamamoto Orthopedic Surgery

Otolaryngology:

- Murakami Clinic

You can check their locations on the map (on the right page)!

Phone services ☎

Students can choose from different phone carriers depending on their preferences and budget. There are phone service providers in Shintanabe that students can visit to learn more about their service plans. Students are advised to check in advance that their current smartphone can be used with Japanese cell phone carriers.

You can check the location on the map (the right page)!

Housing

Once you have decided to enter Doshisha, the university will introduce you to recommended places to live. You can also find an apartment through real estate agents affiliated with the university. We share the information about a typical dormitory room in the Housing section on the "Monthly Expenses of Kyotanabe Students" page.

MAP surrounding Doshisha University

You can buy most of the necessities in Kyotanabe or Miyamaki and have easy access to other big shopping malls using the trains. Other than those shown on the map, many other shops exist such as restaurants, cafes, hair salons, etc. There are also izakayas (Japanese pubs), and a delicious hamburger restaurant.

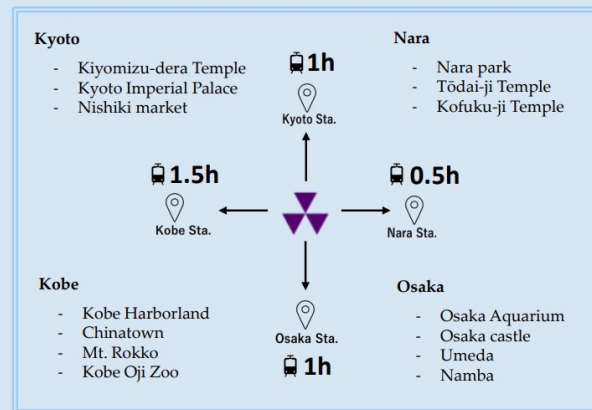


Deliverables

Do you know where we are?

Kyotanabe Campus is located conveniently in the middle of the Kansai area which makes it accessible to major sightseeing places. The Kansai area is unique and famous for its rich nature, long history, and traditional culture.

Here are some interesting places to visit:



You can reach these destinations easily by train!

Additionally, the Kansai area of western Japan has long been famous for its authentic food culture. Many well-known Japanese dishes came from this area. For example: Takoyaki, Okonomiyaki, Kushiage, Kitsune Udon, Yatsuhashi, and Uji Green Tea.

Make sure not to miss any of the opportunities that Kyotanabe campus has to offer!

Looking for more information for your journey in Kyotanabe city?
Additional information can be found below to help you start your new adventure!

1. Tourism Association of Kyotanabe city
2. An English brochure with a map of Kyotanabe city
3. Kyotanabe City web page for foreign residents
4. Feel Japan

The page includes sightseeing spots in Kyotanabe that will be great to visit on your day off.

The page includes events and services occurring in the city of Kyotanabe.

The page has helpful information regarding natural disasters, consultation services for foreigners, etc.

The video showcases Japanese culture through everyday life on Kyotanabe campus.



Difficulties through the project

- Deciding what information to include in the pamphlet
- Understanding the information needed by international students
- Designing an appealing pamphlet that can be easily comprehended by the readers

Skills acquired throughout the project



Critical thinking skills to analyze and evaluate problems and difficulties faced by international students living in Japan



Effective communication by sharing the overall progress continuously



Scheduling and time management to accommodate the members' schedules accordingly

Skills acquired throughout the project



Improved communication skills beyond a language barrier



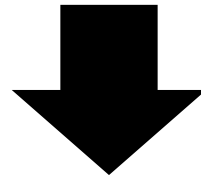
Effective task distribution and collaborative teamwork to finish the project within the designated time frame



A global perspective

Expectation of future results

- Reduce the stress and anxiety of future international students regarding living in Japan
- Kyotanabe will be known as a good place to live for students



More students will be looking forward to starting their new life in **Kyotanabe**



Thank you for your attention!

